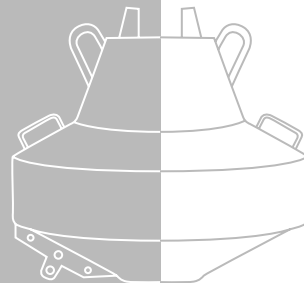




## INLAND WATERWAY BUOY BET-1010 PE

### APPLICATION

Marking of waterways, canals, sandbanks and other maritime obstacles



The BET-1010 PE has been specially developed for use on inland waterways for various applications. It is especially suitable for use on rivers with moderate flow speeds of up to 3 m/s. Due to its low mass only a relatively light anchoring is necessary. Therefore the buoy is easy to handle.

The buoy consists of 2 parts mounted on a steel skeleton. The floating body is made of polyethylene and is manufactured by rotational casting. The floating body is durable, colourfast and therefore almost maintenance-free.

The buoy can be delivered in the standard IALA colours of red, yellow and green. A ballast weight can be attached to the lower part of the steel skeleton.

The inland waterbuoy buoy BET-1010 PE is supplied with two lifting eyes and an adjustable anchor fastening. Both are made of hot galvanized steel.

Optionally, a radar reflector can be supplied, which is attached to the upper part of the steel skeleton.

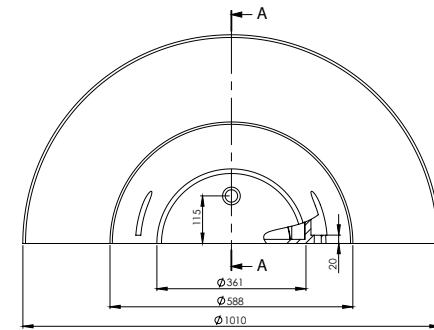
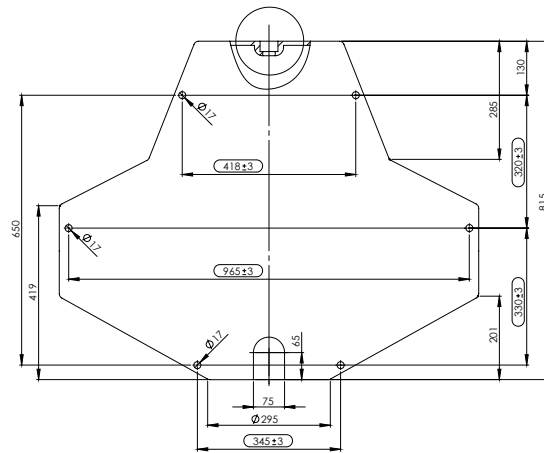
### FEATURES

- durable, UV-resistant and maintenance-free body made of polyethylene (PE)
- service life up to 10 years



**OPTIONAL**

- day marker with integrated radar reflector
- ballast weight



TECHNICAL SPECIFICATIONS	
Diameter float construction	1,010 mm
Wall thickness float construction	10 mm
Total height	depending on the design
Height above sea level	depending on the design
Total weight	approx. 60 kg (unballasted)
Steel skeleton, mooring eye	galvanised steel
Float construction	polyethylene

ARTICLE NUMBER	ARTICLE	SHAPE	COLOUR
1-T2-00-11-00	Inland waterway buoy BET-1010 PE	cylinder	red
1-T2-00-22-00	Inland waterway buoy BET-1010 PE	cylinder	yellow
1-T2-00-33-00	Inland waterway buoy BET-1010 PE	cone	green

